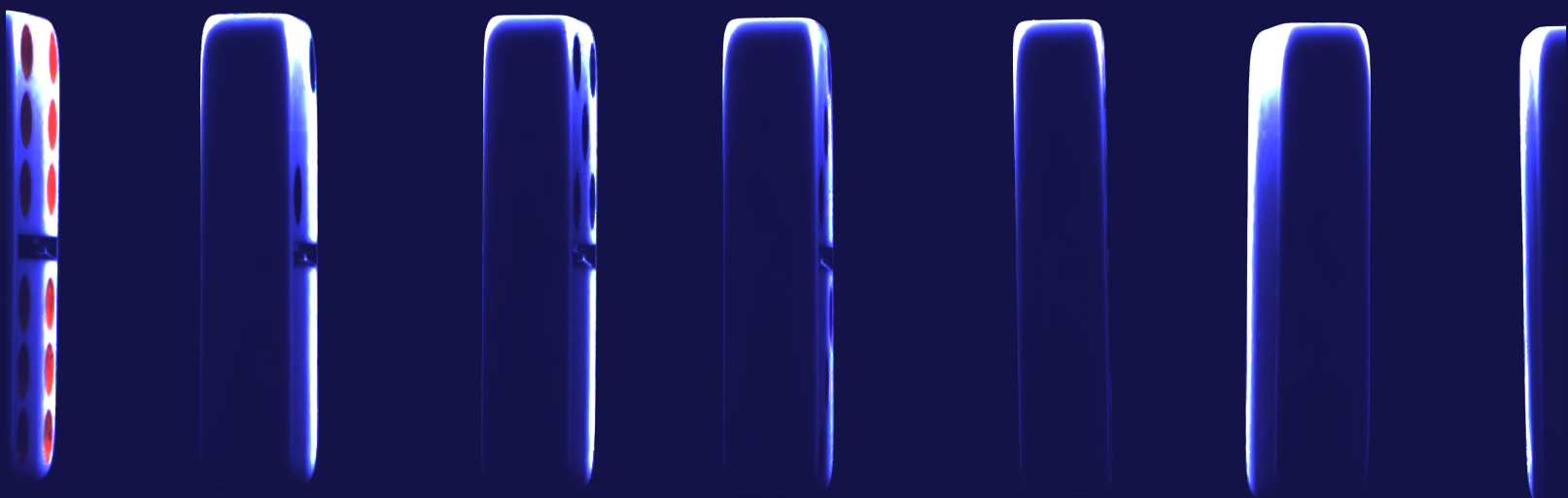


DOMINO
III FOUNDATION

ANNUAL
REPORT
2021



Contents

Who we are

CEO Report

The Domino Foundation Programme Reports:

Babies Home Programme

Early Childhood Development Programme

Life Skills Programme

Skills Development Programme

Nutrition Programme

Red Light Programme

Civil Unrest Report

SME Development Programme

Domino Volunteers

Domino Donors

Pg 3

Pg 4 - 5

Pg 6 - 7

Pg 8 - 9

Pg 10 - 11

Pg 12 - 13

Pg 14 - 15

Pg 16 - 17

Pg 18 - 19

Pg 20 - 21

Pg 22

Pg 23

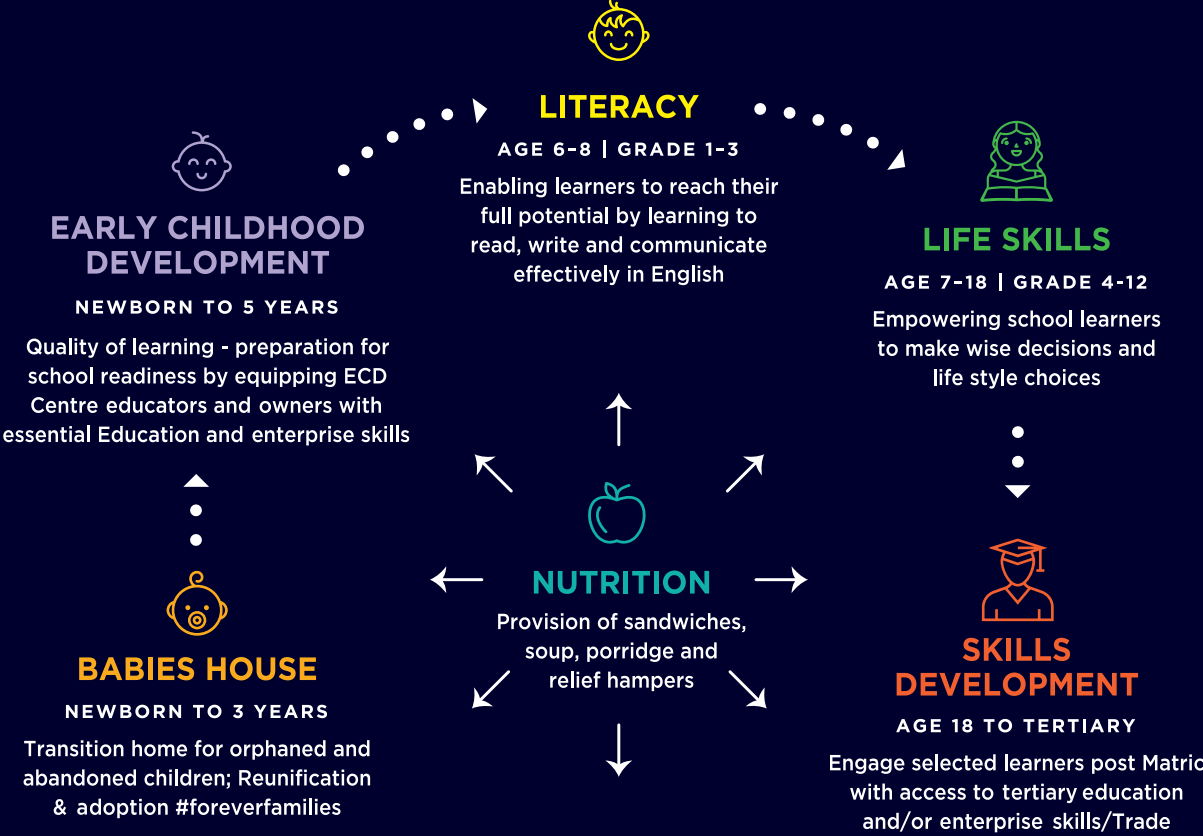


Who we are

We are a non-profit organisation that desires to see individuals and communities within South Africa living in dignity, justice, hope and with purpose.

This is achieved by creating essential structures geared towards supporting people, projects and programmes that are meeting the needs of individuals and communities holistically through mercy, justice and empowerment.

#jointhedominoeffect



SAFETY NET PROGRAMMES

DISASTER RESPONSE

This unit acts to manage and reduce the impact of a disaster to improve the livelihood of affected communities

RED LIGHT

Reaching out, restoring and releasing survivors of sexual exploitation and Human-trafficking



“We make a living by what we get.
We make a life by what we give.”
- **Winston Churchill**

2020 and subsequently 2021 have been years like no other. With the hope of vaccines ushering in the New Year, the effects of COVID 19 continued to dampen a large part of 2021 for Government, Business and Civil Society.

**CEO
REPORT**
BY SHAUN TAIT

Despite the pandemic, and the subsequent civil unrest in June, 2021 was one of resilience for The Domino Foundation. By year-end, over 85% of our employees had been vaccinated against the virus and we are grateful that none of our direct employees succumbed to the disease, even though most of our team were at the cold face. I want to thank each and every employee for doing all they can to protect themselves and fellow employees, and for adapting quickly to policy changes and hybrid working conditions. I also wish to honour the lives and memories of those employees, colleagues, beneficiaries and partners who lost friends and family members to COVID 19.

Despite challenging economic conditions, and most schools remaining closed for the first six months of the year, our teams delivered exceptional results and continued to learn, adapt, pivot and grow. COVID provided a time to reflect, review and pause while also providing opportunities to strengthen core competencies and evaluate areas for growth. While continuing with normal programme operations, we focused on three key areas in 2021 to future-proof The Domino Foundation for years to come.

Team Development and capacity building

We support a work culture that is fun, motivating, challenging and exciting for all staff and a key focus of 2021 was continuous team development. 19 staff members had the opportunity to study further in their fields or attend computer training to help fast-track our digitisation efforts. The introduction of 360 evaluations, team reviews and personal development plans, have allowed for Domino to expand our capacity and build competencies for future growth. 2021 saw our staff complement expand to a total of 39 staff members with the addition of a second Donor Relations Consultant, Marketing manager and driver. We also restructured some staff roles and opened positions for Social Justice Co-Ordinator and Educator Co-Ordinator, setting up a strong operations team to ensure programmes are supported, thriving and expanding in years to come.

Expansion of programmes & Reach

The devastating Civil Unrest in July 2021, will forever be etched into the memories of residents of KZN. From devastation, hope rises, and our disaster response team mobilised, with the support of countless churches, businesses and individuals, to serve vulnerable households across the affected areas. Again partnering with the KZN Response team and newly formed Heal Our Land Initiative (HOLI), Domino was able to oversee the co-ordination of six distribution centres across the province (all 11 districts) to support over 130 000 beneficiaries*.

More details about the response efforts of KZN Response and HOLI can be found in this report on page 18 & 19. Out of this growth, an expansion of our Enterprise Development programme materialised, in partnership with Domino Business. An SME relief programme and

SME Mentorship programme were developed and we assisted 10 SME's to resume trading activities and become more economically sustainable. These programmes can be applied to various industries and we are excited to see growth in this intervention in 2022 and beyond.

Finally, due to the team's ability to adapt and respond quickly to this crisis, using systems and processes established in 2020, our online support grew as we were considered 'first responders'. Our Marketing and Communications team worked hard to capitalise on this increased exposure, resulting in our reach extending to over 130 countries, a 377% increase in our Social Media reach and a 78% increase in website traffic over the period. This allowed us to partner with over 101 new donors (a combination of Businesses, Churches, Individuals, Schools, Trusts and international supporters) resulting in our international funding contributing towards 2% of our total donation income at year end.

Income Diversification

Financial resources are a major factor affecting our ability to work deeper into the issues facing our beneficiaries. The increase in our income in 2021 allowed us to accomplish more, together. Our financial goals remained at the forefront during the year. Our short-term strategy of building a three month reserve fund, was maintained for the 2021 period, ending with 4.7 months cash on hand. The Donor and Marketing team continued to drive our medium-term goals of managing a diversified donor portfolio, reducing our reliance on one income stream and ensuring growth in both national and international sources. Our Financials have been adjusted to show this breakdown and you can monitor the spread within each programme report. Lastly, our long-term sustainability continues to be driven by Domino Trust, Domino Business and other partners and this is steadily growing to ensure long-term survival of our work and impact to ensure back-office continuity going forward.

Every year, when we review The Domino Foundation's activities of the previous twelve months, there is overwhelming evidence of men and women laying down their lives for "the least of these". 2021 was no exception. Our primary work is that of deliberate, sustained community transformation and what follows is a report giving testimony to the communities, the volunteers, the staff and donors, who give more of themselves each year, as together we stand up for what we believe to be right: seeing individuals, families, and communities keep moving toward upliftment, justice, opportunity and a better future. As you page through this report, know that it is because of all our stakeholders that we are able to tell this story.

Our programmes were stretched way beyond what anyone might have anticipated. And yet, the grace and favour of our superabundant Father has enabled us to respond significantly over and above what may have been expected in more 'normal' times. This report of what each programme has achieved is largely described in

a bold visual format with infographics and statistics. However, behind the bold and vibrant pie-charts with their abundant data and demographics, we are determined that we should never lose sight of each and every individual who is at the heart of what The Domino Foundation is about: "Change a life, change a community".

So thank you to our volunteers who overcame your own fears in order to serve others. Thank you to our donors who went over and above to change lives. Thank you to our staff, who laid down your lives to empower beneficiaries. Thank you to the more than 30 000 beneficiaries who we had the privilege of serving. **And Thank you to our Father in heaven, who has given us dignity, justice, hope and purpose through the ultimate champion, Jesus Christ, who, by His Spirit, empowers us to make a life worthy of his name.**

Shaun Tait

*See Civil Unrest Report for breakdown of beneficiaries

BABIES HOME

JAN - DEC 2021



BABIES HOME TEAM

Crisis Parent: Precious Thabethe

Caregivers:

- Maureen Lisa
- Busisiwe Duma
- Phindile Ndlovu
- Nomfundo Thabethe
- Fundiswa Duma

PROVIDE 24 HOUR HOLISTIC CARE

We provided a safe and nurturing transition home to care for 10 vulnerable babies and toddlers.

SAFEGUARD JUSTICE

We continued to protect vulnerable children in partnership with local justice and protection services i.e. Durban North SAPS, Child Welfare Durban/Others and District and Department of Social Justice.

DEVELOPMENT AND STIMULATION

We implemented the Early Childhood Development 150 Tool Programme to record and track their developmental milestones to be achieved in their first 1,000 days. In addition the Staff Team went on Healthcare and Computer Literacy Training.

NETWORKING

We engaged with other Transition Homes and the Welfare Departments to share models of 'best practice'.

MONITORING AND EVALUATION

The stats enclosed in this report are evidence of the measurements in place to ensure we are caring for orphans in distress.

BIBLICAL MANDATE

"Religion that God our Father accepts as pure and faultless is this: to look after orphans and widows in their distress and to keep oneself from being polluted by the world." – James 1:27



STATS

USED: 4,452 NAPPIES
LOCAL ADOPTIONS: 2
INTERNATIONAL ADOPTIONS : 2

STATUS OF INTAKE & TRANSITION THROUGH FAIRHAVENS BABIES HOME IN 2021

Beneficiary	Age at arrival	2017	2018	2019	2020	2021
Child A Female	4 months old			x	x	x
Child B Male	10 months old			x	x	x
Child C Female	6 months old			x	x	x
Child D Male	4 months old				x	x
Child E Male	3 weeks old					x
Child F Male	2 months					x
Child G Male	3 weeks old			x	x	Adopted SA
Child H Male	6 months old	x	x	x	x	Adopted UK
Child I Male	18 months old	x	x	x	x	Adopted UK
Child J Female	3 months old					Adopted SA



OVERVIEW

As it has always been, the goal of "Fairhavens" Babies' Home is to serve the community by taking care of abandoned babies & toddlers.

In its provision of a safe, loving and nurturing environment for each child, excellent standards in health, hygiene, nutrition and early childhood development have been maintained. The aim of the home is to facilitate the children's reunification with their biological/extended families or their adoption into permanent "forever" families. Vulnerable children are placed into the

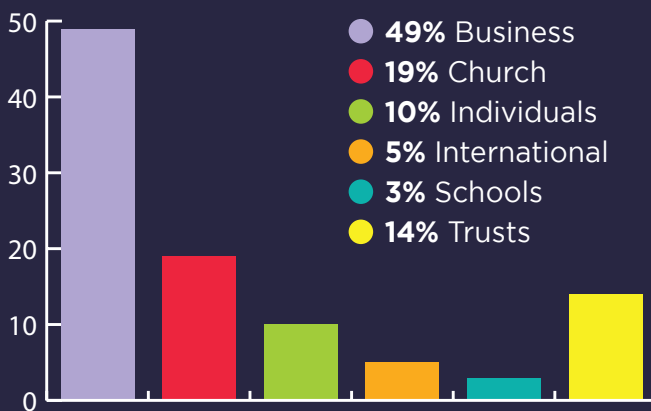
home's care through Child Welfare Durban and District.

Staff have been upskilled through focused training, workshops and the provision of bursaries. The programme networks with the police and with the Department of Social Development.

FINANCIAL SNAPSHOT

TOTAL INCOME:
R857 552,00

CASH DONATION BREAKDOWN:



TOTAL EXPENSES
R857 088,00

EXPENSES BREAKDOWN:



ANNUAL COMPARISON	2020	2021
Number of Beneficiaries	9	10
Cost per Beneficiary	R89 608,22	R85 708,80

LOCATION



EARLY CHILDHOOD DEVELOPMENT

JAN - DEC 2021



BUSINESS ADMINISTRATION TRAINING

The Business Training Workshop was conducted with Ikhona Skills for our 11 partnering ECD owners. They were trained on essential business skills to enable them to run their business efficiently.

EDUCATOR EMPOWERMENT

The educators attended NELRU (Natal Early Learning Resource Unit) and three Theme Workshops (How to prepare daily programmes: classroom layouts and plans, monthly themes and resource collection methods). They also implemented our ECD 150 Tool, developed by us in line with Department of Social Development's guidelines on ECD Centre Management. The purpose of this tool is to measure a centre's performance based on 7 impact areas using 202 indicators.

NUTRITIONAL ASSISTANCE

We continue to empower our ECD partners for them to provide daily nutritious meals for their learners.

MENTORSHIP

Our field workers visited each ECD centre on a weekly basis and a total 564 site visits were done. This is to assist with child understanding, implementing teaching techniques, skills development and lessons learned. This Change Management Monitoring Tool is at the core of the success of the Enterprise & Educational Development Programme.

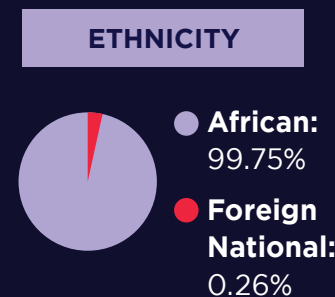
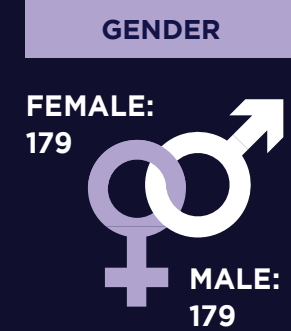
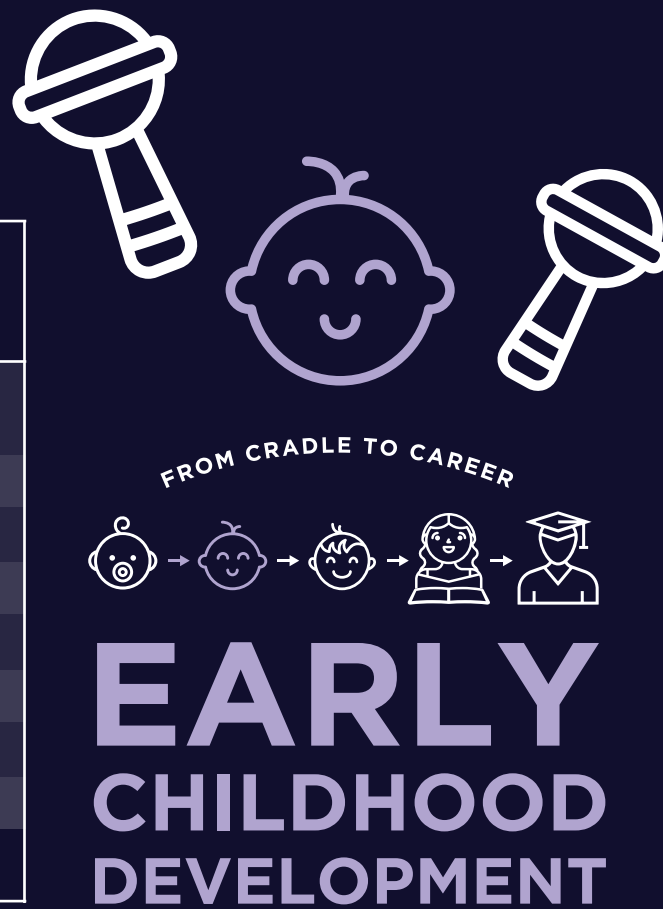
MONITORING AND EVALUATION

214 Baseline Assessments were done, this tool helps us to track and assist in terms of developing the learner's physical, emotional, social and cognitive abilities.

BIBLICAL MANDATE

"Train up a child in the way he should go; even when he is old he will not depart from it." – Proverbs 22:6

CHILD MILESTONE ACHIEVEMENT TABLE	
AGE	MILESTONE ACHIEVED
1 yr old	86%
2 yrs old	50%
3 yrs old	64%
4 yrs old	50%
5 yrs old	56%
6 yrs old	100%
Average	68%
*Proportion achieving 100%	



OVERVIEW

The programme's core focus is to prepare vulnerable children in ECD centres for school readiness by equipping the ECD centre owners and educators to develop learners holistically, and to give owners the enterprise skills to run the crèches as successful small businesses. ECD centre owners and teachers were trained in the importance of a consistent daily programme, classroom layouts, collection and use of age-appropriate learning resources.

Mentoring and monitoring sessions assisted staff with the implementation of theme methods and skills. Child-milestone assessments tracked the progress and effectiveness of the ECD programme.

The programme's vision is to enlarge its area of impact by taking on more ECD centres into their programme.

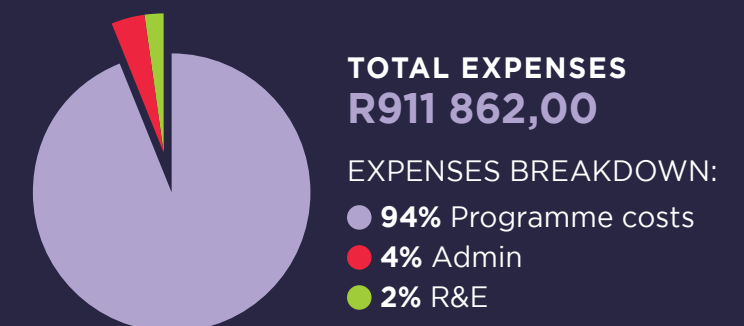
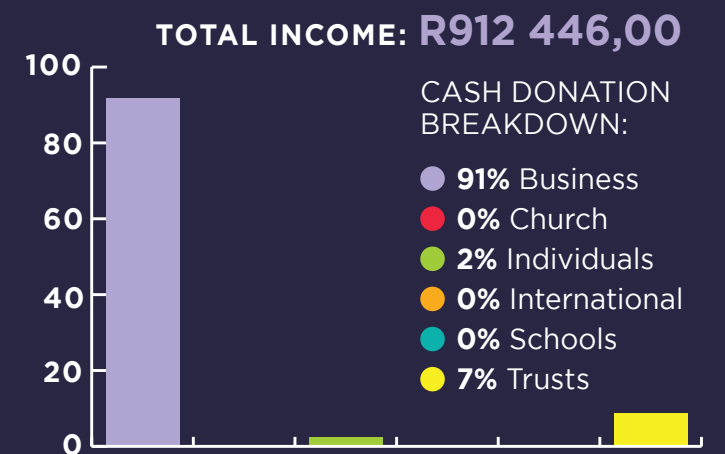
ECD TEAM

Team Lead: Zanele Nzimande

Field Workers:

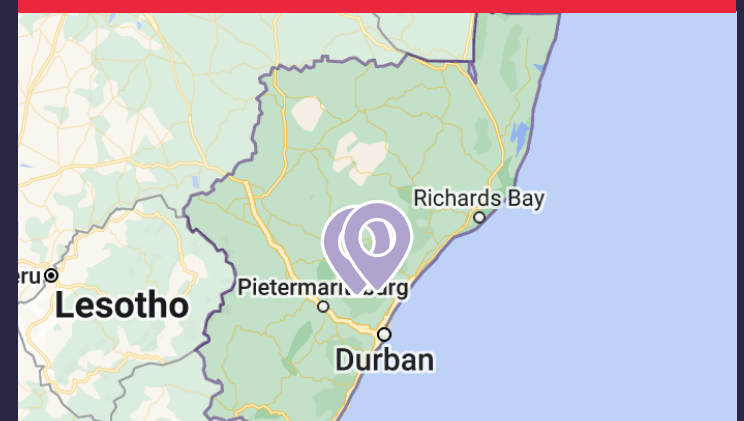
- Happiness Zulu
- Naaleen Luthuli
- Mbali Shezi

FINANCIAL SNAPSHOT



ANNUAL COMPARISON	2020	2021
Number of Beneficiaries	204	391
Cost per Beneficiary	R2282,98	R2332,13

LOCATION



LIFE SKILLS JAN - DEC 2021

SUSTAINABLE
DEVELOPMENT
GOALS



LIFE SKILLS TEAM

Team Lead: Thobile Msani

Youth Workers:

- Thabiso Mlita
- Scelo Miya
- Nonhlanhla Majola

LIFE SKILLS LESSONS

We implemented our four year values based curriculum into two primary schools as follows:

- 563 Lessons Taught
- 35 Themes Explored
- 4 Site Observations
- 4 Monitoring and Implementation Assessments Completed

Assessment of Youth Worker teaching ability based on:

- Exposure
- Quality of Delivery
- Participants Responsiveness
- Adherence

LEARNER ENGAGEMENT

The Youth Workers engaged in 89 One on One Sessions with individual learners throughout the year.

CURRICULUM UPDATES

As many of the learners were at home due to COVID-19 Restrictions the team pivoted to technology to reach and teach them through digital using whatsapp video and email to share thoughts and lessons:

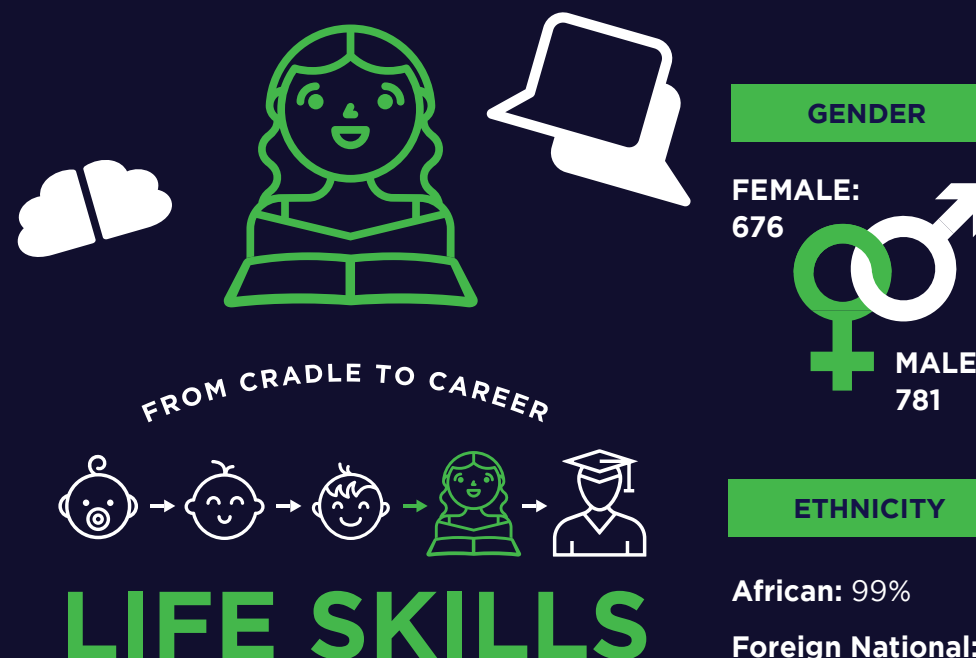
- 17 Online Videos
- 64 Lesson Plans
- 35 Yr 1 PowerPoint Presentation
- 29 Yr 2 PowerPoint Presentation

BIBLICAL MANDATE

"They will be called oaks of righteousness, a planting of the LORD for the display of his splendor." – Isaiah 61:3

VISION

To empower young people to make wise life choices, through mentorship help young people to become better citizen. To know their worth as (defined by Christ).



OVERVIEW

The programme's one-year school programme aims to empower young people to make wise life choices. COVID protocols meant learners attended school on alternate days. Lessons had to be repeated and the team had a challenge meeting teaching objectives. Timetabling challenges resulted in the team not teaching Grade 7s in the last term of 2021.

A teacher shortage led to the Domino team teaching the Life Orientation. CAPS curriculum, Physical Education and art lessons, and doing their test and exam assessments. This included data-capture onto SAMS. The One-on-one sessions with learners were very helpful to get to know the individual learners better.

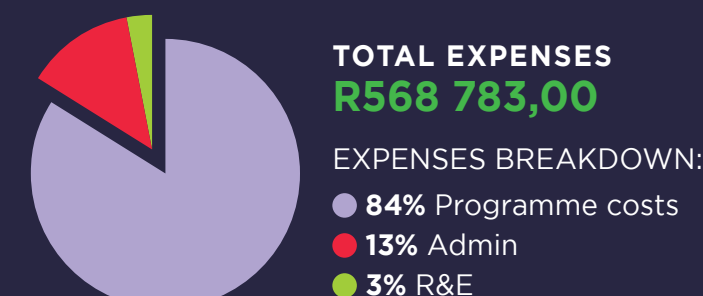
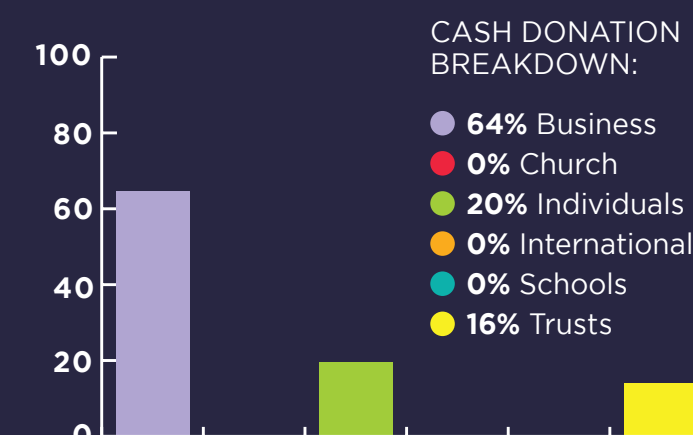
The programme also worked with 200 orphans and vulnerable children at Zwakele who were receiving a sandwich each day through the Nutrition programme.

"It was a tough and challenging year for us, but every obstacle gave us an opportunity to grow and work together with the schools and the learners." - Thobile Msani, Team Leader

Age Groups	Boys	Girls
9 years	92	91
10 years	207	181
11 years	162	138
12 years	91	116
13 years	161	125
14 years	45	20
15 years	20	4
16 years	2	0
17 years	1	0
18 years	0	1

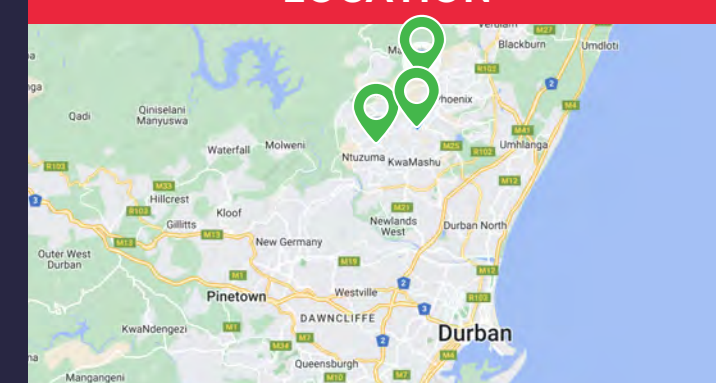
FINANCIAL SNAPSHOT

TOTAL INCOME: **R649 689,00**

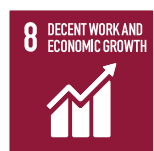


ANNUAL COMPARISON	2020	2021
Number of Beneficiaries	954	1457
Cost per Beneficiary	R604,85	R390,38

LOCATION



SKILLS DEVELOPMENT JAN - DEC 2021



TERTIARY LEVEL EDUCATION

Bursaries were offered to 27 candidates to study at the following universities: UKZN, UNISA, DUT, MUT, Mancosa and Stadio.

VOCATIONAL EDUCATIONAL

Five disabled candidates were offered learnerships through Khulisani and two beneficiaries did a Welding Course through Samsons Welding School.

STUDENT MENTORSHIP

The Skills Development Co-ordinator engaged in 256 mentorship sessions with the candidate to sign their MOU's, get term highlights, well being, health, academic and problems they encountered, and to find solutions to overcome these together.

CAREER SHOWCASE SESSIONS

In October 2021, 180 Grade 9 Learners from Amaoti High School were taken to the Blue Roof Career Centre in Wentworth to conduct Career Guidance Assessments and attended their Health and Wellness Workshop.

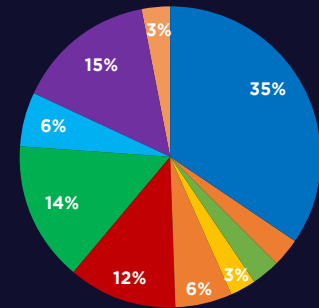
MONITORING AND EVALUATION

A pre and post survey was conducted around career choices for the Grade 9 learners to measure the impact of their subject choices in accordance with their aptitudes.

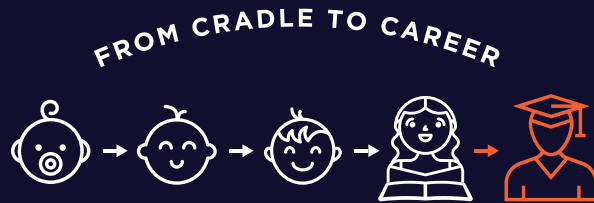
BIBLICAL MANDATE

"For I know the plans I have for you," declares the LORD, "plans to prosper you and not to harm you, plans to give you hope and a future."
- Jeremiah 29:11

FIELD OF STUDY



- Education
- Marketing
- Engineering
- Built Environment
- Entertainment/Music
- Law
- Financial
- Adult Matric
- Trade Skills
- Aviation
- Business
- Social Sciences



SKILLS DEVELOPMENT

GENDER

FEMALE:
118



MALE:
96

ETHNICITY

African: 97.20%

Indian: 0.93%

Coloured: 1.87%

OVERVIEW

The programme provides access for disadvantaged people to tertiary qualifications funding for academic fees, living and travel allowances and educational resources. Disabled students are catered for, and vocational education opportunities (learnerships and apprenticeships) are available.

In the year under review, there were 33 students receiving bursaries for degrees, diplomas and higher certificates.

The mentorship programme helps students share their challenges, receive advice and support and ready themselves for seeking post-graduation employment.

Through regular meetings and workshops, the Life Skills and ECD programmes' teaching strategies and curricula implementation were reviewed.

SKILLS DEV TEAM

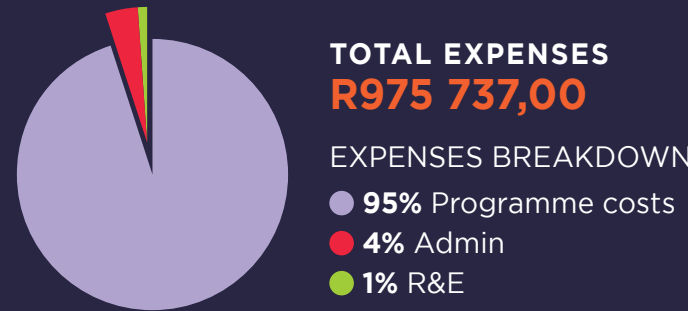
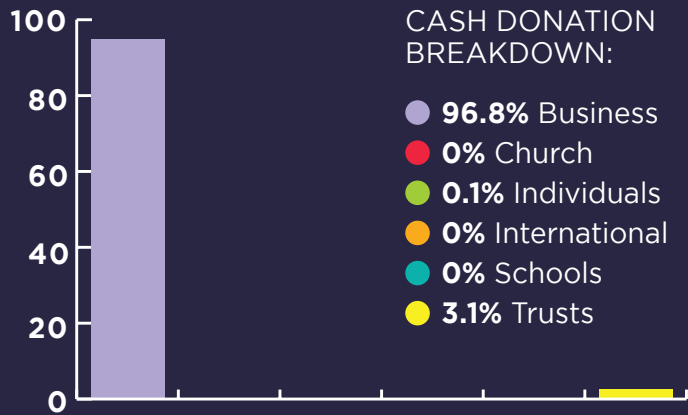
Team Lead: Nobuhle Ndlovu

Mentors:

• Malusi Kubheka

FINANCIAL SNAPSHOT

TOTAL INCOME: **R1 270 091,00**

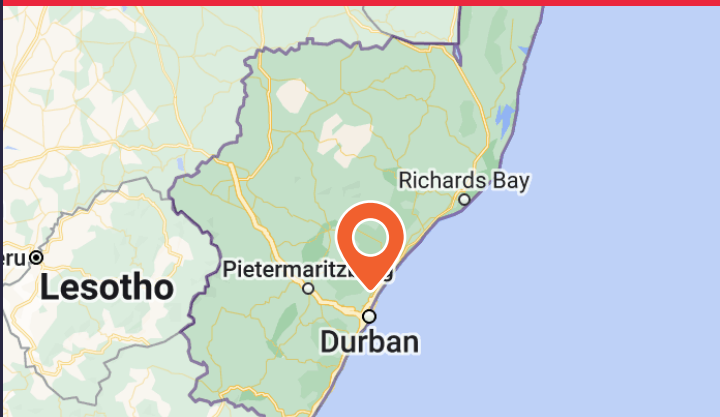


TOTAL EXPENSES
R975 737,00

EXPENSES BREAKDOWN:
• 95% Programme costs
• 4% Admin
• 1% R&E

ANNUAL COMPARISON	2020	2021
Number of Beneficiaries	13	34
Cost per Beneficiary	R28 698,15	R35 089.69

LOCATION



NUTRITION

JAN - DEC 2021



NUTRITION TEAM

DURBAN NORTH & SOUTH BASIN TEAM

Programme Leaders:

Cathy Whittle and Cheryl Dann

Ops:

- Mdu Vato
- Angel Mtshali
- Petros Mgenge
- Sne Shezi
- Thuli Shezi
- Zikhona Diya
- Gloria Nyawuza
- Nicole Schoeman
- Markus Geiser
- Purity Ngongo
- Navin Badahur

SANDWICHES

26,681 sandwiches were delivered to partnering primary schools, who are not on the Government Nutrition Programme, or who have Orphaned and Vulnerable Children at schools, who then take the sandwiches home. Each child receives a sandwich for lunchtime during the school term.

SOUP

223,941 bowls of beef bone and vegetable soup was made by the Domino Soup Kitchen, and delivered daily to partnering creches and ECD centres.

JAM PORRIDGE PARTNERSHIP

382,417 portions of high protein, soy based porridge which is delivered once a month to all partnering ECD centre, which they make daily as a breakfast for their learners every day.

RELIEF HAMPERS

2,422 hampers were made up and sent out monthly to partnering churches and other non profit organisations, to support vulnerable families and their short term relief efforts (this excludes the Disaster Relief Unit support).

BIBLICAL MANDATE

"For I was hungry and you gave me something to eat, I was thirsty and you gave me something to drink, I was a stranger and you invited me in."
- Matthew 25:35

OVERALL NUTRITION OUTPUT

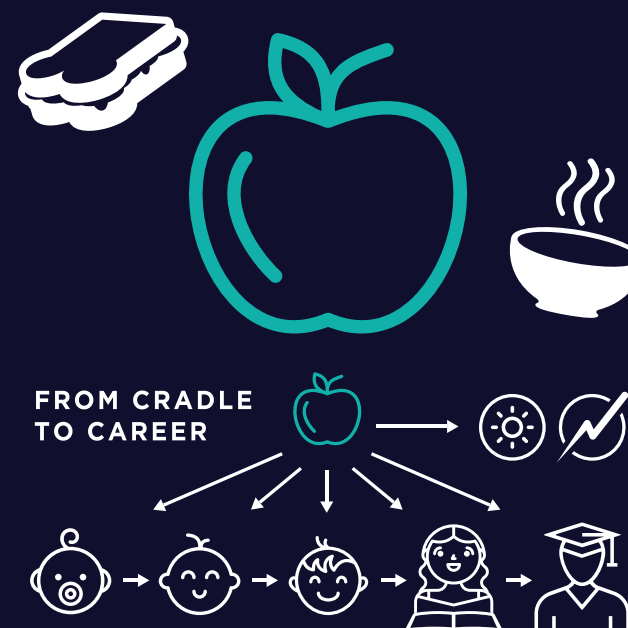
Sandwiches:	26 681
Soup:	223 941
JAM Porridge:	382 417
Relief Hampers:	2 422

OBJECTIVE

Our aim is to change mind-sets about nutrition and re-set the trajectory of long-term health in schools and communities, whilst shaping crèches and learning centres through sustainable food partnerships of sandwiches, soup, porridge and relief hampers.

REFLECTION

2021 was a year of uncertainty, daily fluctuating learner numbers, unpredictable school days and increased need and demand. The lockdowns and Civil Unrest has resulted in lost jobs, unpaid school fees, high school absenteeism, non-access to provided meals. A huge set back economically, educationally and nutritionally for all. All things considered, a challenging but successful year.



NUTRITION

MEASUREMENT FEEDBACK

	MARCH	OCTOBER	% CHANGE
STUNTING	247	223	-10%
WASTING	67	72	7%
OBESITY	111	48	-57%

FINDINGS:

- Decrease of 10% of flagged cases of possible stunting cases within the sample
- Decrease of 57% in obesity rates within our sample
- Increase of 7% of the sample group displayed signs of wasting.

The pilot measurement allows our teams to flag cases for further follow-up. Further investigation from our team would need to include understanding margins of error, sample bias, integrity of data, as well as ensuring referrals to clinics and medical professionals for further intervention.

GENDER

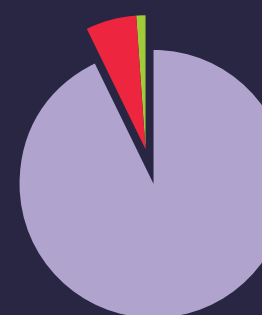
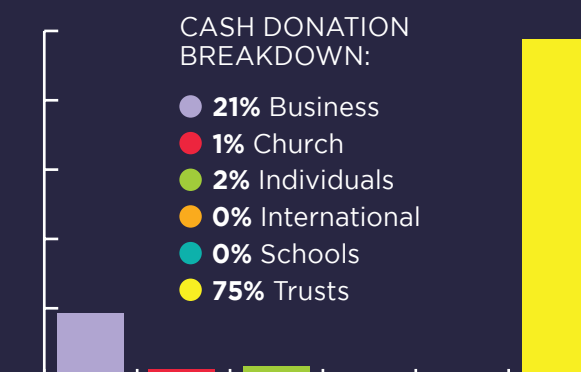
MALE: 2666
FEMALE: 2633

ETHNICITY

African: 96,51%
Foreign National: 3.49%

FINANCIAL SNAPSHOT

TOTAL INCOME: **R3 353 746,00**



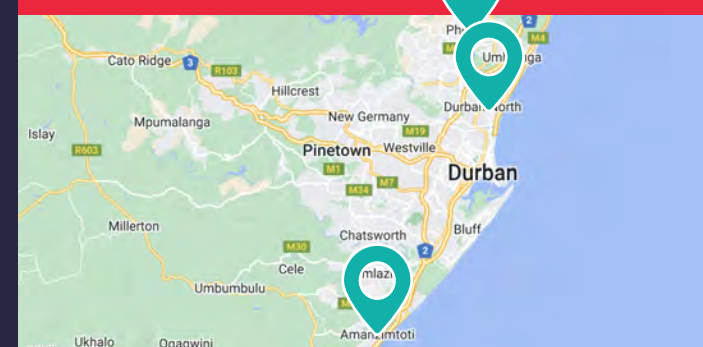
TOTAL EXPENSES
R3 063 132, 00

EXPENSES BREAKDOWN:

- 93% Programme costs
- 6% Admin
- 1% R&E

ANNUAL COMPARISON	2020	2021
Number of Beneficiaries	7138	5299
Cost per Beneficiary	R367,23	R578,06

LOCATION



RED LIGHT

JAN - DEC 2021



RED LIGHT TEAM

Restore Co-ordinator:
Gugu Mazwele

Release Co-ordinator:
• Esther Madikane

REACH OUT

We partnered with Expose Hope SA to do street outreach in the Durban CBD and Morningside area and ran one Anti Human Trafficking Awareness Campaign to identify potential beneficiaries, and assessed six new beneficiaries to bring into the programme.

RESTORE

A total of 197 cases of counselling, 30 Group Sessions as well as four trauma debrief sessions were conducted to see the ladies restored to health and wellness with dignity and purpose. In addition 18 Task Team Meetings were held and one War Room Engagement to build cohesion.

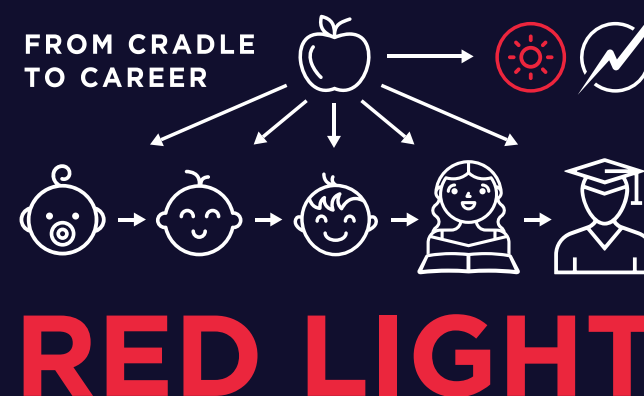
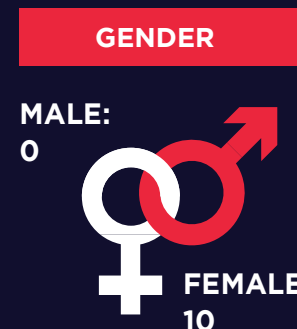
RELEASE

Our intention is to release survivors into economic freedom in order to be reintegrated into society and these were our Release Outcomes:

- Enrolled four matriculants: One lady wrote her exams but did not pass all her subjects and will be rewriting her exams, another absconded and two ladies will be writing their exams in May/June 2022
- One lady registered for the Health Promotions Officer's Course
- Two beneficiaries registered for Security Courses
- Three ladies registered for a sewing course at a Fashion School and have graduated
- Seven beneficiaries will complete their Business in the Box training in Jan 2022.



"The Spirit of the Sovereign LORD is on me, because the LORD has anointed me to proclaim good news to the poor. He has sent me to bind up the broken-hearted, to proclaim freedom for the captives and release from darkness for the prisoners." - Isaiah 61:1



COLLABORATIONS

1. Joyce Meyer Ministries helped map all anti human trafficking hotspots at the Durban CBD, with the help of TB/HIV Care, Exit Solutions, and Expose Hope SA.
2. Street outreach at night with Expose Hope SA.
3. Built new relationships with Sbusisiwe Clinic, Smeeta in Mumbai India, Impumelelo Foundation founded by a survivor of sexual exploitation.
4. Built new relationship with Ethembeni Crisis Centre, Akrams Shelter, Careline Trauma and Crisis Centre.
5. Managed to secure a long term partnership with Anchorlite College and with The Dynamic school of security.
6. Built relationship with the Department of Home Affairs to assist our beneficiaries who do not have identity documents.

OVERVIEW

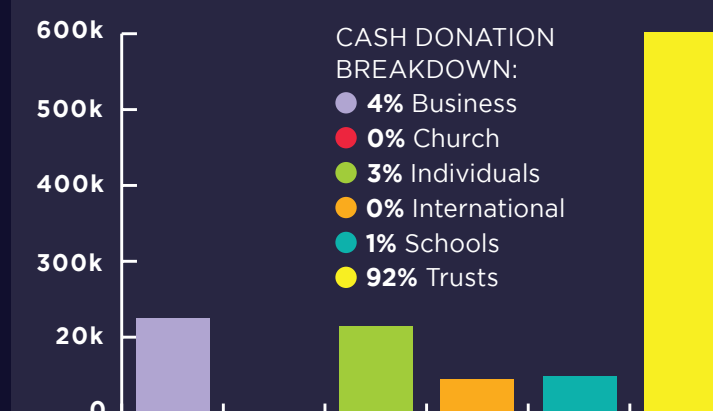
The programme's vision is to reach out to, to restore and to release survivors of sexual exploitation and human-trafficking to live sustainable lives of freedom and purpose. The ongoing focus is to network and build sustainable relationships with external partners to facilitate intake and out-take referrals of new beneficiaries. In partnership with various groups, street outreach to identify potential

beneficiaries was conducted in several areas of the city and human-trafficking hotspots were mapped. To assist beneficiaries who do not have identity documents, a relationship with the Department of Home Affairs has been built.

The year has been very productive in case-counselling, group sessions and trauma counselling, task team meetings, the anti-human-trafficking awareness campaign and interaction with community War Rooms.

FINANCIAL SNAPSHOT

TOTAL INCOME: R721 757,00



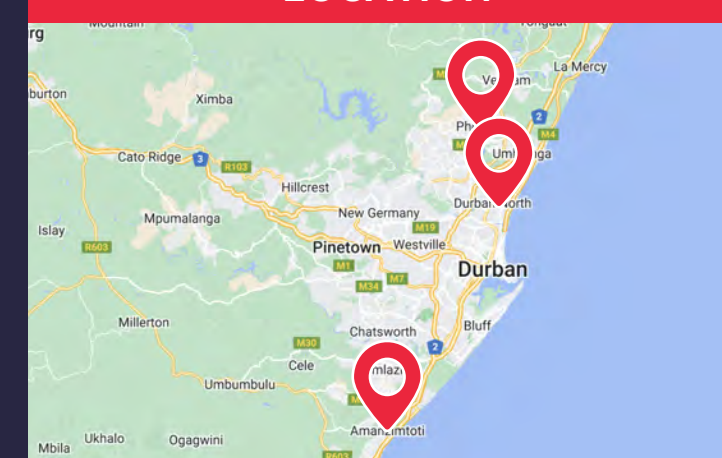
TOTAL EXPENSES R489 389,00

EXPENSES BREAKDOWN:

- 80% Programme costs
- 15% Admin
- 5% R&E

ANNUAL COMPARISON	2020	2021
Number of Beneficiaries	10	10
Cost per Beneficiary	R33 231,00	R48 938,60

LOCATION



DISASTER RESPONSE UNIT

CIVIL UNREST REPORT



JUL-SEP 2021

PSYCHOSOCIAL

SOCIAL COHESION WORKSHOPS

COMMUNITY DIALOGUES TOTAL 8
3 Ethk | 3 KCDM
1 Umkhanye | 1 Zululand

ATTENDEES: 229

NATIONALITIES: 14 (TOP 10)

1. Burundi	6. Zambia
2. Gambia	7. Ethiopia
3. DRC	8. Rwanda
4. Zim	9. Mozam
5. Nigeria	10. South Africa

FOCUS GROUPS:

- Community leaders
- Community members
- Youth members

FOCUS TOPICS:

- Who's who in your neighbourhood?
- A sense of belonging
- Promote unity
- Peace
- Trust

"We have learnt that we are ONE as Africans & we need each-other"

TRAUMA COUNSELLING

Trauma awareness & resilience workshop

ATTENDEES: 15

PSYCHOSOCIAL WORKSHOPS

TOTAL PEOPLE 571

PEACEBUILDING

Online webinars to train pastors & community members on de-escalation methodology & skills and build task-teams within communities

COMMUNITY DIALOGUES 14

ATTENDEES 560

FOCUS GROUPS:

- Genders
- Government
- Community leaders
- Community members
- Inter-faith leaders
- Dialogues between nationalities

FOCUS TOPICS:

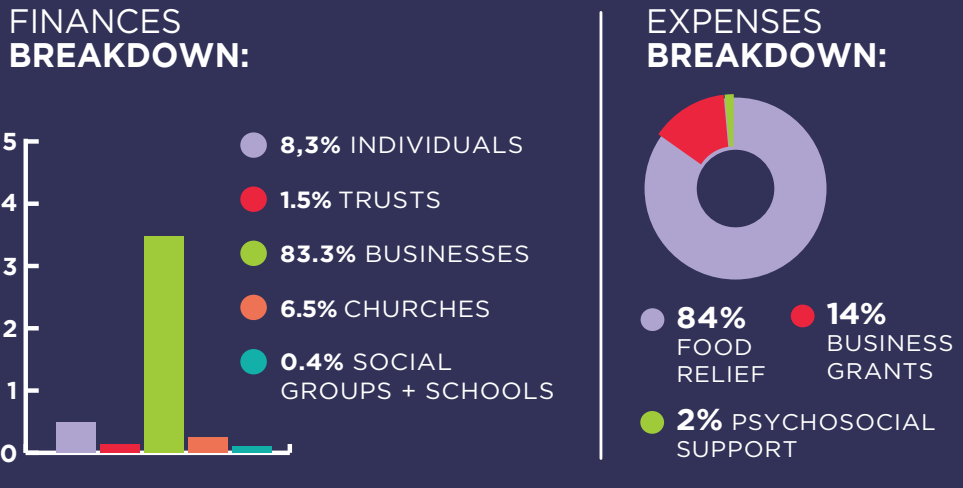
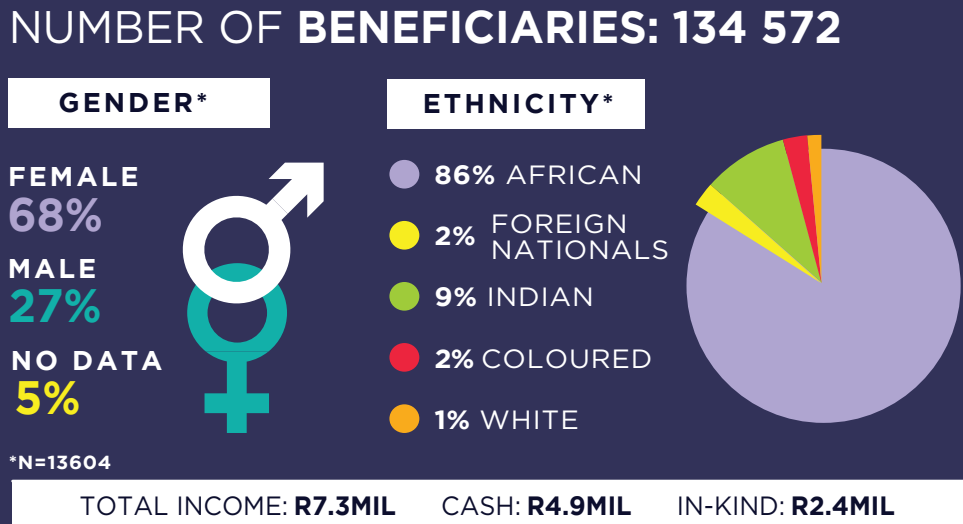
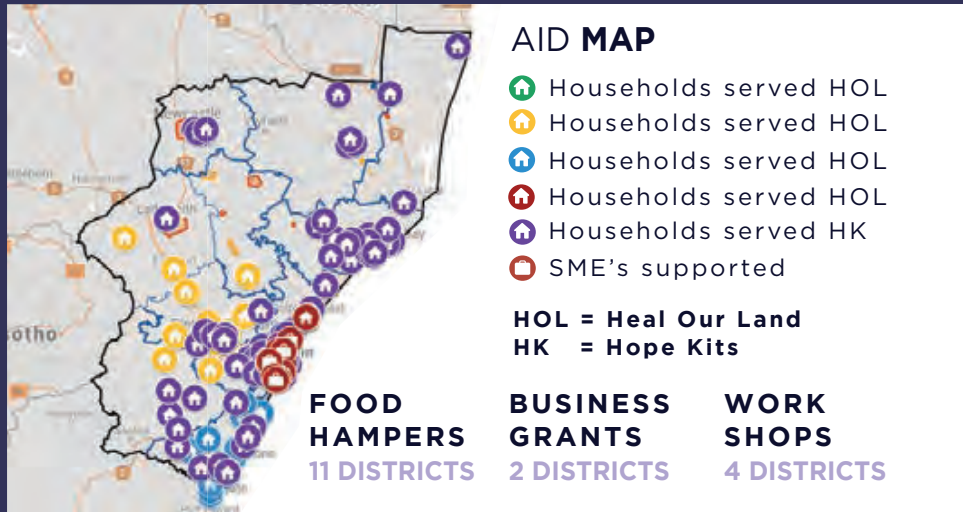
- De-escalation for immediate violence
- Long-term rebuilding
- Strengthening relationships

HIGHLIGHTS:

- Anger turns to interest.
- Woman finding power in their voice

COMMUNITIES:

1. KwaMashu	6. Westville
2. Mbambayi	7. Cato Manor
3. Phoenix	8. Mooi river
4. Inanda	9. PMB
5. Ntuzuma	10. Umlazi



6,887 KM'S DRIVEN

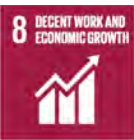
77x Comrades Marathons
29x Tour Durban Cycle Race
57x Duzi Canoe Marathons

231 COLLABORATION PARTNERS

2727 VOLUNTEER HRS

Volunteered by 489 individuals from schools, churches & businesses

SMALL TO MEDIUM
ENTERPRISE
DEVELOPMENT



SME TEAM

- Shaun Tait
- Domino Business
- Mickey Wilkins
- Theo Brown

ECD DEVELOPMENT

Through our existing ECD programme offering, one Business Training Workshop was conducted for 11 partner ECD owners. They were trained on essential business skills to enable them to run their businesses efficiently.

BUSINESS RELIEF

10 Businesses in distress were taken through a business rescue process as follows:

- Pre & post business assessment
- Site visit and assessment
- Assessment Report submitted
- Owner Agreement signed
- Grant payment #1 paid
- Grant payment #2 paid
- Final site visit and assessment
- Post Call Survey

SMME DEVELOPMENT

One business was referred to us for SMME Development and the following process took place:

- Intro meeting
- Application process
- Initial evaluation
- Recommendations
- Implementation
- Evaluation

BIBLICAL
MANDATE

“Lazy hands make for poverty, but diligent hands bring wealth.” Proverbs 10:4
“If you are faithful in little things, you will be faithful in large ones.” Luke 16:10

VISION

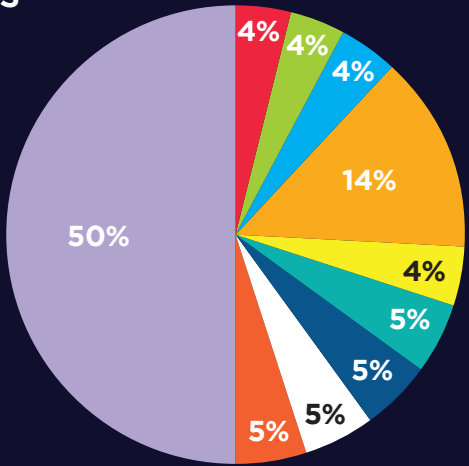
Our vision is to raise up, empower and equip SMME’s with the necessary business skills and knowledge to expand the economic impact of their enterprise and create shared value for community transformation.

OVERVIEW

It was an incredible year for the SME development programme. With the reopening of schools early in 2021, crèches returned and programme training could commence. The riots in July 2021 provided an opportunity for the programme to expand, and together with Domino Business, new coursework was developed to assist SMEs that had been looted. The expansion allowed for greater reach and new offerings and we are excited to see the programme grow in 2022.

TYPE OF BUSINESSES

- Maritime Surveillance
- Bed & Furniture
- Funeral Service
- Food Industry
- Traditional Clothing
- Construction
- Dentist
- Training Services
- Salon
- ECD

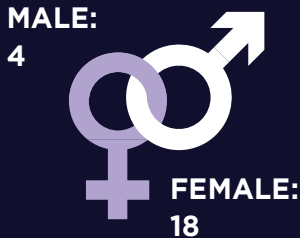


FROM CRADLE TO CAREER



SME
DEVELOPMENT

GENDER

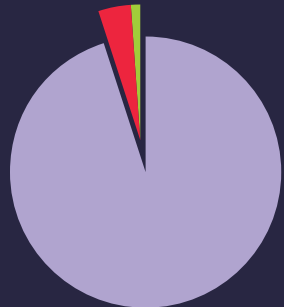
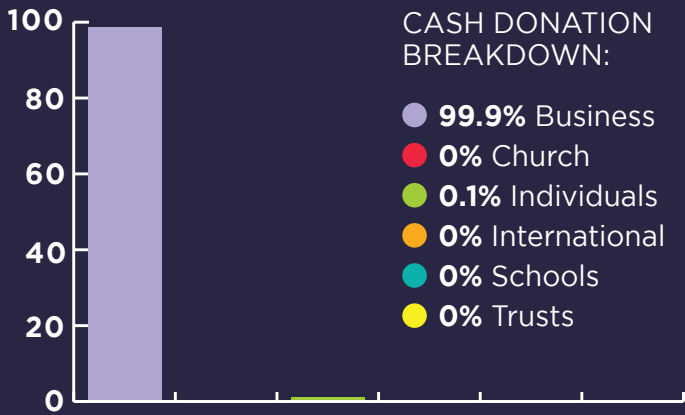


ETHNICITY

African: 100%
Foreign National: 0%

FINANCIAL SNAPSHOT

TOTAL INCOME: R301 200,00



TOTAL EXPENSES
R320 759,00

EXPENSES BREAKDOWN:
• 95% Programme costs
• 4% Admin
• 1% R&E

ANNUAL COMPARISON

2021

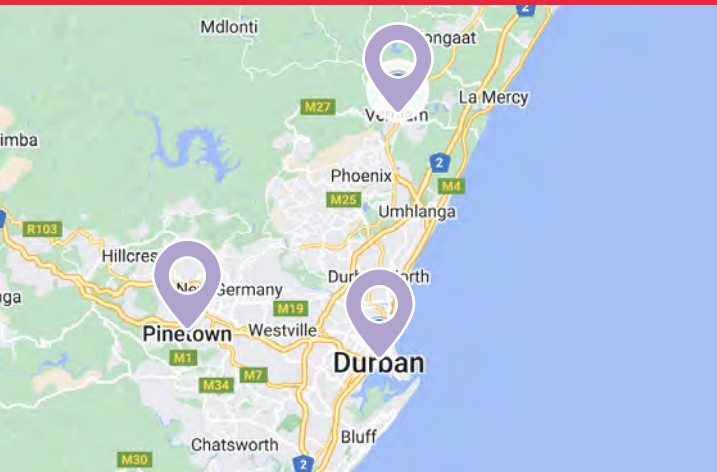
Number of Beneficiaries

22

Cost per Beneficiary

R14 579,95

LOCATION



VOLUNTEER REPORT



The excitement of wide-spread vaccinations at the beginning of the 2021, got our hopes up to resume to normal volunteer programming. Unfortunately, we had a much slower 'return to normal' than anticipated but with strict COVID protocols and our new favourite word 'PIVOT', we were able to accommodate over 500 volunteers throughout the year, to assist in serving our communities.

We segment our volunteer base into 8 focus groups, allowing us to tailor-make volunteer's options that best fit both Domino and the volunteers.

Adhoc/Once off volunteers – A boost in adhoc volunteers as aQuelle Tour Durban was able to be staged in 2021 with volunteers assisting at water tables and registration. Also post-Civil Unrest, a number of volunteers assisted with packing relief hampers and helping at points across Durban CBD to help clean up the city.

Com Serve and Schools Programme – due to COVID 19, a number of these activities were put on hold, although when schools

returned in Q3 of 2021, students were able to assist with packing of hampers and food items for Civil Unrest support. Some students also 'earned' hours by purchasing specified non-perishable items and filling relief buckets at home.

Virtual Volunteers – Sandwich making for the nutrition programmes both North and South of the city was done largely in socially-distanced kitchens rather than in the programme facilities. Approximately three dozen high school learners notched up community service hours, each having to deliver 90 sandwiches to earn two hours of service. (Time spent purchasing and given to making sandwiches).

VOLUNTEER INVOLVEMENT BREAKDOWN 2021:

VOLUNTEER INVOLVEMENT	NO. OF VOLUNTEERS	TOTAL NUMBER OF HOURS DONATED:
1. ADHOC / EVENTS	318	1274
2. REGULAR	76	3097
3. SKILLED VOL	1	20
4. COM SERVE	4	339
5. SCHOOLS PROG	212	11
6. E.V.P/IMPACT DAYS	10	0
7. INTERNATIONAL	0	252
8. VIRTUAL	35	252
TOTAL	656 VOLS	5185 HRS

TOTAL VOLUNTEER HOURS

5185

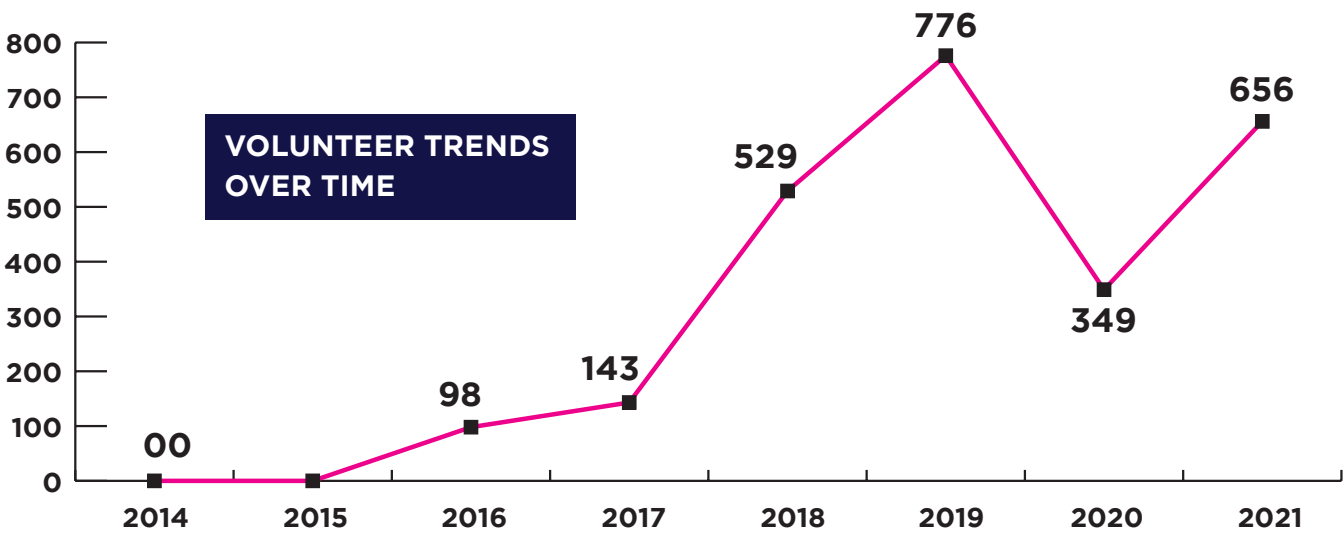
Standard 8 hr wrking days saved

648

working Months saved (22 days)

29

LOCAL



Although not at full capacity, our volunteers streamed back to Domino to support and get involved in community projects once COVID lockdown restrictions had eased. We want to thank ALL volunteers for committing themselves whole-heartedly towards our programmes and volunteer initiatives. Volunteers add that something special and we couldn't do what we do without YOU!



OUR DONOR LIST

On behalf of every Domino Foundation beneficiary and staff member, we would like to extend our sincere and heartfelt gratitude to every individual, family member, friend, church body, corporate business, trust fund and foundation, from South Africa and those abroad/internationally, that have invested into the works of our hands in 2021.

You have made it possible to serve those in need amongst us. The list below is in alphabetical order and reflects the diversity of funding received. Thank you for being a part of the #DominoEffect

Audited Financials available on request please email accounts@domino.org.za

A Patterson Ace Retail Africa Sun Oil Agile Commodities Alice Kenworthy Allan Stuart Amfi Freight Annelize Anthem Church AP Muirhuid aQuelle Art for Action SA Art for Action SA - Finland Art for Action SA - Italy Ashburton New Life Church - NewZealand Astrid Harris Atom Foundation AVI Community Trust Avonside Trading B Gordon B&S Plumbers Back-2-Life Chiropractice Balloon Printers Barbara Lack - Zapper Beier Footwear Belle Ross Bitline SA Bosjes Trust Broleigh Precision Bryce Perrett C Basson Alexia Smith C Wiseman - Paygate CAF South Africa Canway Christ Church Umhlanga Cindy Governder City Hope City Lodge Claire Newton CLM Van Der Walt CM Fraser Coker Family Charitable Trust Colin McNaught (Paypal) Concord Trust Container Ministries Contour Technologies Cox Yeats Dana Kleu (Switzerland) Dandy Agencies David Burrows (AUS) David Hardy David Symons DaxData Debbie Steers	Debra Home Deck & Patio Devika Hunsraj Diplomat Dischem Foundation Domino Business Drawbar Consulting Drennan Maud (PTY) Ltd Edison Power Electical Ellis Park Butchery Ethnos Movement Fabian Baggott Fatima School (Sports for Lives) Feeding Kwacutshwayo Ferfam Charitable Trust FET Peterson FFS Refiners Fidelity Guards Floor Dixel Fm Callanan FMI Food Forward FPT Group FR Waring Francis Callahan Fresh Flavour Fresh Footwear Fulton Trust FX Medical GB Bearings Gemelli Glenridge Church Global Voice of Prayer Graeme Maclean GrandGaming - KZN Slots Grant Rosetenstein Greenacre Foundation H Patrick Hingham Nursery Hoegh Autoliners PTY Ltd Hollywood Foundation Hope Church George Hope Meats Hugh Howard Illovo Sugar Ingrid Portman IS Ntombela Ivan Miosic Will Trust Ivy Pheasant Estate Late JAM SA Janine Green Jessica Reis Jeursen Johan Beukman Johnston & Partners	Jonathan Fell Joseph Gillespie Journey Church Joyce Chandragasen Joyce Meyer Ministries Judy Carter Julie Anderson K Dolloway K Harilall Karen Brokensha Kathleen Basson Katie Gruhn (USA) KCT Cruise Terminals (MSC) KEY Motor Group Kolisi Foundation Kyle Nelson (UK) Launa Green LD Baker & Associates Leigh Malakellis (Aus) Leigh O'Mahoney Lenandi Stynberg Leon Joubert Liberty Liquors Lindi Liz Jones LM Cullen Locispex Looto Investments (AmbleSide) Lorna Elliot - UK M Ndaba M Stone Marius Bezuidenhout Mark Telfer Mary England Masimo Chemicals SA Matthew Cole Mel & Greg Ramanna Melissa Gibson (UK) Melissa Padoa/Cowlin Michael Frawley (UK) Michelle Allanby Michelle Burke Michelle Pearton Mike Proctor Foundation MM Signs CC Mphelel MrPrice Foundation Mrs Chetty Mrs Robin Collins MS Wulfsohn MSC Depots MSC Logistics MSC Printing MSC Properties Multimedia Signs Muthulingum Naik N Whiting	NA Wood Nautica Organics (D/O) NEASA Nicholas Ash (UK) Nick Keary Nicky Walton NS Gumede Nusa Clothing Ocean Africa Container Lines Odwa Jali OneHope Church (USA) Orbis Investment UK Oricol ES P Brummer Tertius P Lategan PailPac Panafrika Security Paula Wicks PEP Stores Peter Lavett Pick 'n Pay Pioneer Facilities PJ Wallace Poobie Naidoo Port Stevdoring Preeshna Nundlall Premier PSG wealth FP Pure Trade Rachel Maehler Radiometer RCL Foods Rebone Shaku Relief Medical Pty Ltd Rewards Co Richard Cullen Ridge Management Association Ridgeside Management Association Rise Against Hunger Rita Bosthan Rivers Foundation RL Mainguard Road Load CC Robert Ian Kennedy Robin Hamilton Charitable Trust Robinhood Foundation Robyn Cooper Rory Stott Roy Governder Rupak Vasishta S Watson SA Bullbars Sally Spall Sally V Churchill Samantha Kransingh Sarah Kennedy	SED Signs Shannon Kennedy Shantal Sharnelle Shaun Tait Siqalo Foods SM Lazarus South Point Church Southern Cross Chain Sports for Lives NPC - Hilton Sue Bate Surita Mathur Susan Jones Sweet Nothings Swiss Steel SA T Baggott TC Electrical Services Tencent Africa The Debschein Trust The Victor Daitz Foundation The Victor Daitz Foundation (Oshabeni) Tiger Brands TJ Askew Tmothy Fill (UK) TO Basson Toti High School Trusha Chetty Tummah Trd Turbofluid Engineering Ubunye Uniforms Ukuthula Trust Umhlanga Ridge Town Centre Management Association Unilever V Illidge Va-Con Vanessa Ramsuser Vetter Attorneys Vinesh Virginia Haupt VOX Coal W&H Smith Family Trust Warren Allen WBHO Wendy Stevens Whatnot Fabric Leisure (D/O) Woolworths Trust ZPMC Engineering
---	---	--	--	---

FINANCIALS

THE DOMINO FOUNDATION ANNUAL FINANCIAL STATEMENTS FOR THE YEAR ENDED 31 DECEMBER 2021

STATEMENT OF FINANCIAL POSITION AS AT 31 DECEMBER 2021

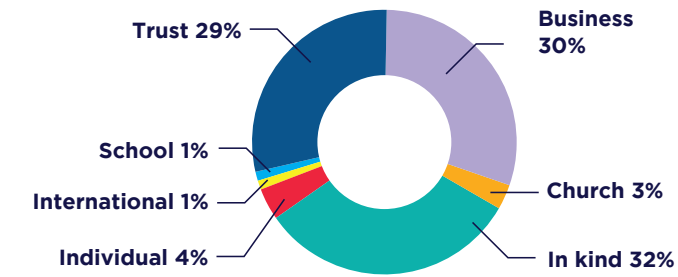
Figures in Rand	Note(s)	2021	2020
Assets			
Non-Current Assets			
Property, plant and equipment	2	3 795 110	3 212 193
Current Assets			
Trade and other receivables	3	49 903	58 618
Other financial assets	4	2 756 792	512 467
Cash and cash equivalents	5	3 981 776	4 413 303
		6 788 471	4 984 388
Total Assets		10 583 581	8 196 581
Funds and Liabilities			
Funds			
Infrastructure development fund		-	470 000
Funds	6	8 339 493	6 405 118
		8 339 493	6 875 118
Liabilities			
Non-Current Liabilities			
Other financial liabilities	8	545 000	500 000
Current Liabilities			
Trade and other payables	7	1 699 088	788 463
Other financial liabilities	8	-	33 000
		1 699 088	821 463
Total Liabilities		2 244 088	1 321 463
Total Funds and Liabilities		10 583 581	8 196 581

INDICATORS	2017	2018	2019	2020	2021
Beneficiaries	5894	9273	13556	30749	45254
Current Ratio	3,86	5,99	8,53	6,07	4,00
Programme efficiency	0,78	0,78	0,79	0,81	0,81
Operating Reserves	5,47	2,85	4,51	5,62	4,72
Net Surplus Growth	947%	-249%	897%	-72%	130%
Net Income Growth	41%	-9%	78%	10%	21%
Net Expense Growth	36%	-1%	32%	33%	15%
Beneficiary Growth	47%	57%	46%	127%	47%
Cost/Beneficiary	R1255,86	R787,92	R710,05	R417,54	R326,16

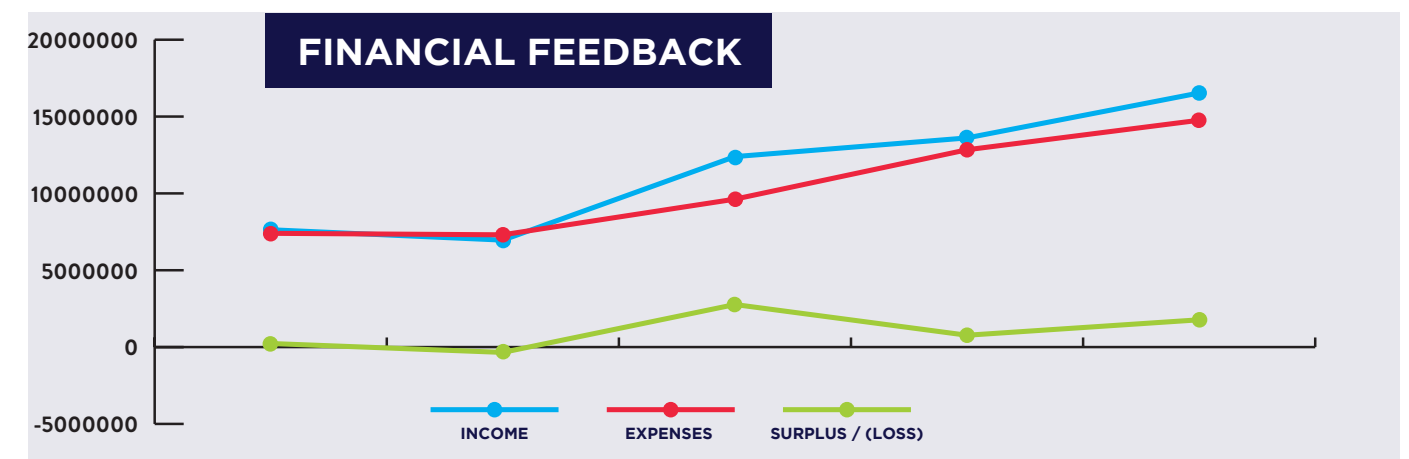
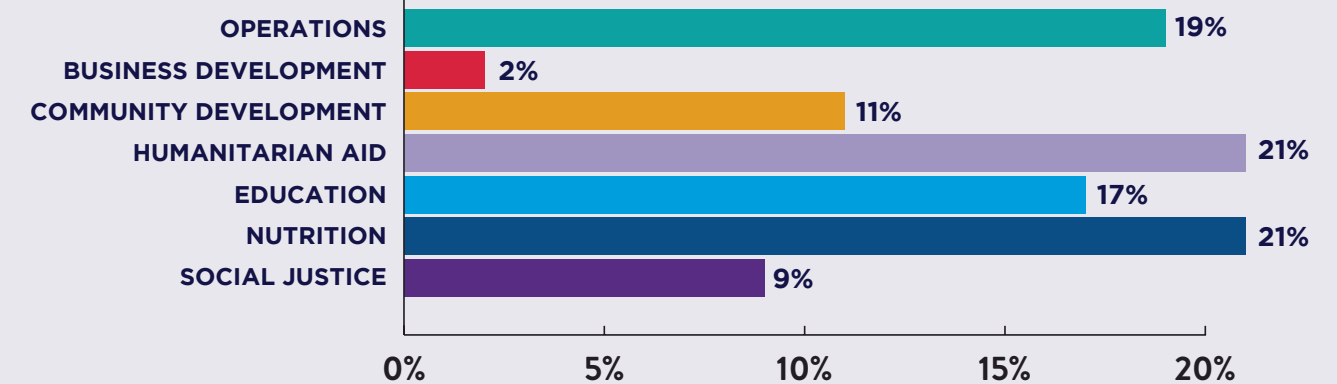


CONSOLIDATED FUNDING AND EXPENDITURE STATEMENT

Figures in Rand	Note(s)	2021	2020
Income			
Business donations		4 339 852	-
Cash donations		600 000	8 544 080
Church donations		454 500	-
Donations in kind received		4 643 232	3 418 945
Individual donations		512 628	-
International donations		211 568	-
School donations		76 887	-
The Victor Daitz Foundation		606 320	-
Trust donations		2 884 916	-
		14 329 903	11 963 025
Other income			
Events and fundraisers		8 437	33 704
Fair value adjustments		534 466	9 325
General cost recovery		765 289	683 609
Income from product sales and welfare subsidy		16 877	5 473
Inter-project cost recoveries		126 944	439 229
Rental income		475 200	475 200
Service fee income		277 724	-
		2 204 937	1 646 540
Operating expenses (Refer to page 8)		(14 759 987)	(12 839 025)
Surplus		1 774 853	770 540
Investment income		159 522	223 338
Surplus/ (Deficit) for the year		1 934 375	993 878
Opening balance		6 405 118	5 411 240
Funds at the end of the year		8 339 493	6 405 118



OPERATING EXPENSES





#jointhedominoeffect

Our annual financial statements are available on request.
We would love to partner with you and your organisation
in effecting social change in South Africa.



admin@domino.org.za
031 563 9605



ARCDESIGNSTUDIO
DESIGN YOUR FUTURE
grant@arcdesignstudio.co.za